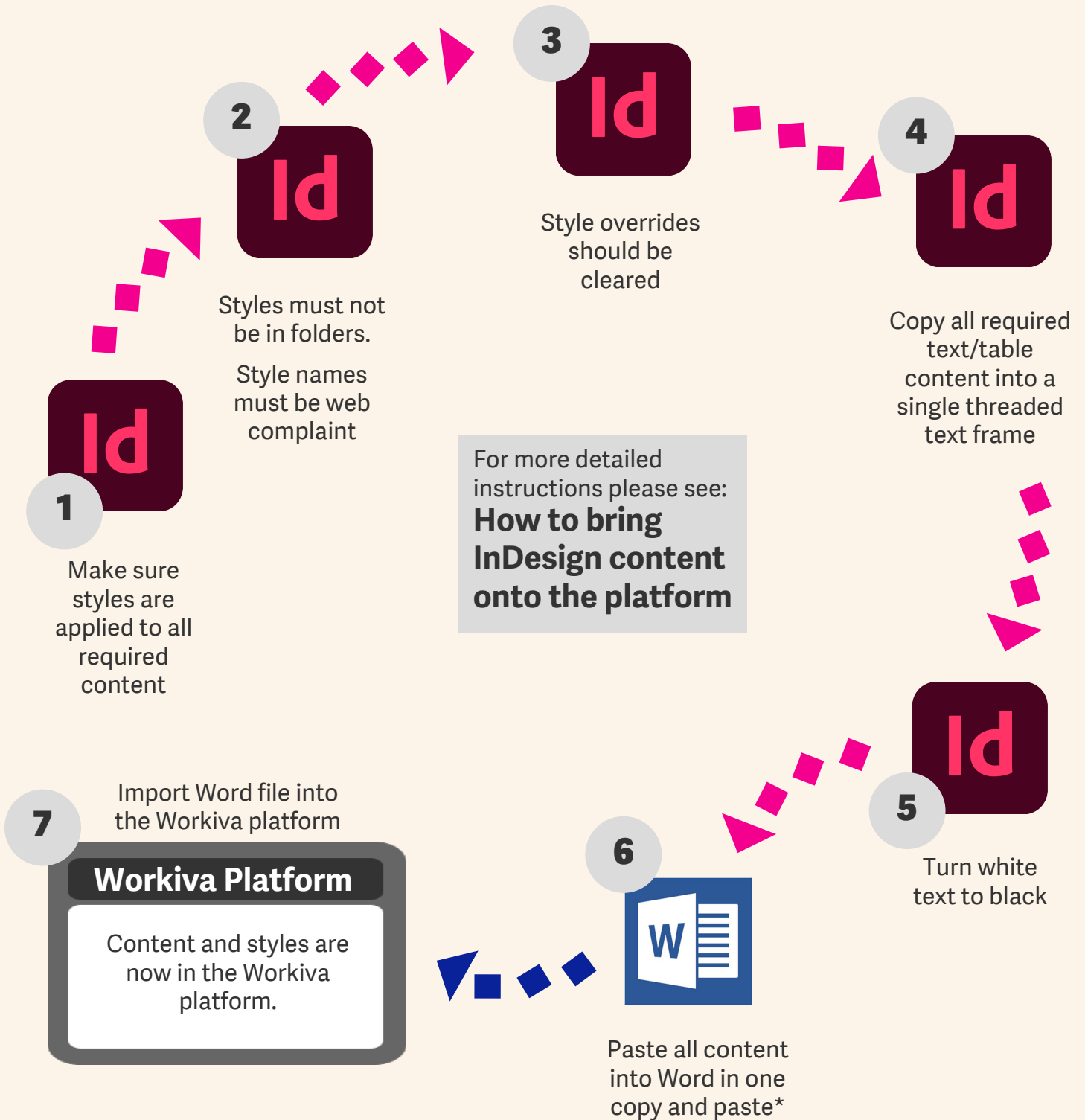


Document setup - Starting with InDesign

This datasheet shows how to take content from an existing InDesign file and migrate it to the Workiva platform together with the styles.

If you want to get content and styles into the Workiva platform follow the steps below.



Important: Avoid PDF to Word conversion



* If there is too much content to copy and paste into Word in one go then split it and copy it into separate Word files and then copy those into one master Word file